

Metron 07 CI

METAL DETECTION

**TUNNEL METAL DETECTOR WITH INTEGRATED EVALUATION ELECTRONICS
USED IN BELT CONVEYORS FOR QUALITY CONTROL OR MACHINE PROTECTION.**

Reliable in Process and Detection
Durable in Technology and Performance
Easy in Installation and Handling

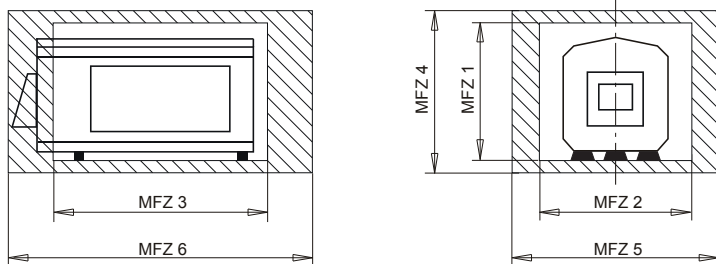
- imagePHASE for best detection results
- Reliable and safe metal detection technology
- Process and condition monitoring
- Indestructible and maintenance-free construction
- Resistant against external influences
- Highest precision in long-term operation
- Network connectivity and data management
- Password protected user management
- Hygienic Design



Applications

Quality inspection
(to meet the requirement of
ISO 9000, HACCP, IFS, BRC, SQF)
Machinery protection

Metal Free Zone (MTZ)



Calculating the 'metal free zone'

For Non-moving Metals

$$\text{MFZ 1} = \text{LH} + 2 \text{ SH} + 60\text{mm}$$

$$\text{MFZ 2} = \text{SL} + \text{LH}$$

$$\text{MFZ 3} = \text{LB} + \text{LH}$$

For moving metals

$$\text{MFZ 4} = 3 \text{ LH} + 2 \text{ SH} + 60\text{mm}$$

$$\text{MFZ 5} = \text{SL} + 3.5 \times \text{LH}$$

$$\text{MFZ 6} = \text{LB} + 3 \text{ LH}$$

Position the detector aperture in the middle of the 'metal free zone'
For the other dimensions: position the detector symmetrical in relation to the aperture.

