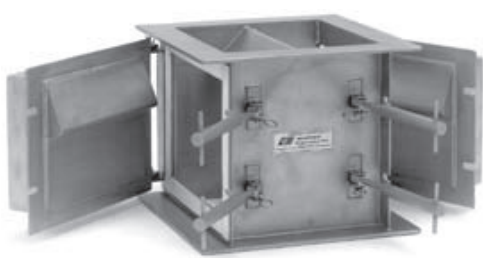




PLATE HOUSING MAGNETS

Bunting Plate Housing Magnets resist bridging and choking to remove tramp iron and ferrous fines from flow-resistant bulk materials

The stainless steel housings mount easily to enclosed spouting or directly on processing equipment. Optional square, rectangular, and round adapters can be supplied to your specifications for ease of installation. A baffle at the top of the housing helps break up clumps and directs product flow over the unit's two powerful Plate Magnets.



Standard Plate Housing

- Excellent for coarse, fluffy, and other flow resistant materials that bridge in grates and drawer magnets.
- Compact design fits easily into limited spaces
- Custom transitions for round, square, or rectangular spouting.
- Rugged stainless steel construction
- Available with powerful, lightweight Rare Earth magnets.
- Hinged plate magnets swing out for manual cleaning.
- Removable/replaceable diverters are optional
- Food and sanitary options available.

Specifications

General material:

All 3mm stainless steel with 6mm thick flanges.

Magnet material:

High-density Ceramic permanent magnetic material. Rare Earth models can be ordered for demanding applications.

Magnet design:

Bunting Plate Magnet with stainless steel. Tapered step face is standard.

Construction:

Housing is all seam welded into an integral unit. Magnets are mounted on swing-away hinges with attached latch and sealed, when closed, with a gasket. Optional replaceable heavy-duty baffle can be ordered to handle abrasive product flow.

Method of cleaning:

Manual, from outside of housing utilizing hinged, swing-away magnets. Self-cleaning options available.

Sizes:

150mm to 500mm sizes. Also available in special sizes to fit processing machinery.



Self Clean Plate Housing

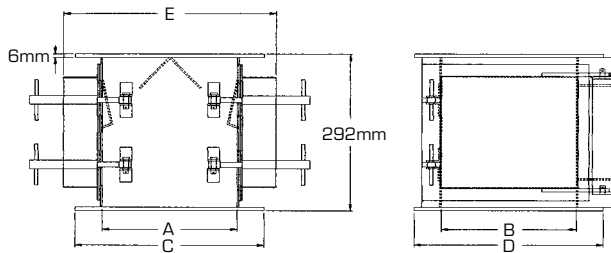


Pneumatic Plate Housing



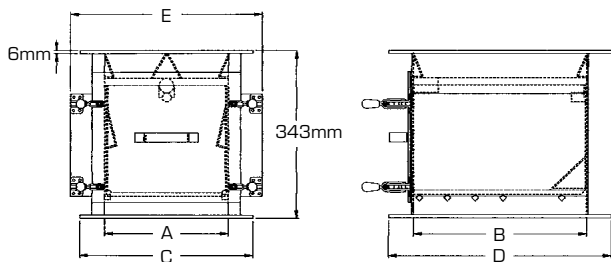
How to Select Plate Housing Magnets

Use the tables to find the standard or self-cleaning models that match the size of your square or round spouting. Recommended housing size is based on comparable cross sectional areas. Flow capacity and flow characteristics of product can affect housing size. Model numbers are followed by **CR** or **NE** to indicate **Ceramic** or **Neodymium Rare Earth** magnets. Be sure to specify **Utility, Powder, Food, or Sanitary** construction when you order.



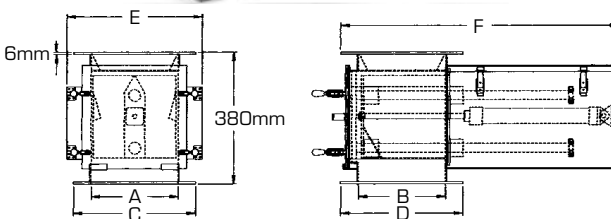
Dimensions and Openings for Standard Models (in mm)

Model No.	Square Spout (Approx. Equivalent)	Round Spout	Open Area 90° Diverter	A	B	C	D	E
PHMS-6-CR	150	178	1016	203	203	305	305	350
PHMS-6-NE	150	178	1016	203	203	305	305	290
PHMS-8-CR	150	178	1016	254	203	335	305	400
PHMS-8-NE	150	178	1016	254	203	335	305	343
PHMS-10-CR	178	203	1270	254	254	335	335	400
PHMS-10-NE	178	203	1270	254	254	335	335	343
PHMS-14-CR	203	254	1778	254	335	335	457	400
PHMS-14-NE	203	254	1778	254	335	335	457	343
PHMS-20-CR	254	280	2540	254	508	335	610	400
PHMS-20-NE	254	280	12540	254	508	335	610	343
PHMS-24-CR	280	305	3048	254	610	335	711	400
PHMS-24-NE	280	305	3048	254	610	335	711	343
PHMS-32-CR	330	355	4064	254	813	335	915	400
PHMS-32-NE	330	355	4064	254	813	335	915	343



Dimensions and Openings for Self-Cleaning Models (in mm)

Model No.	Square Spout (Approx. Equivalent)	Round Spout	Open Area 60° Diverter	A	B	C	D	E
PHMS-6-SC-CR	127	152	660	203	203	305	305	343
PHMS-6-SC-NE	127	152	660	203	203	305	305	343
PHMS-8-SC-CR	152	178	990	254	203	356	305	343
PHMS-8-SC-NE	152	178	990	254	203	356	305	394
PHMS-10-SC-CR	178	203	1295	254	254	356	356	394
PHMS-10-SC-NE	178	203	1295	254	254	356	356	394
PHMS-14-SC-CR	203	254	1905	254	356	356	457	394
PHMS-14-SC-NE	203	254	1905	254	356	356	457	394
PHMS-20-SC-CR	254	280	2819	254	508	356	610	394
PHMS-20-SC-NE	254	280	2819	254	508	356	610	394
PHMS-24-SC-CR	280	305	3429	254	610	356	711	394
PHMS-24-SC-NE	280	305	3429	254	610	356	711	394
PHMS-32-SC-CR	330	356	4648	254	813	356	915	394
PHMS-32-SC-NE	330	356	4648	254	812	356	915	394



Dimensions and Openings for Pneumatic Self-Cleaning Models (in mm)

Model No.	Square Spout (Approx. Equivalent)	Round Spout	Open Area 60° Diverter	A	B	C	D	E	F
PHMS-10-PSC-CR	152	203	1118	254	254	356	356	151/2	864
PHMS-10-PSC-NE	152	203	1118	254	254	356	356	151/2	864
PHMS-14-PSC-CR	203	254	1676	254	356	356	457	151/2	1067
PHMS-14-PSC-NE	203	254	1676	254	356	356	457	151/2	1067
PHMS-20-PSC-CR	254	280	2515	254	508	356	610	151/2	1372
PHMS-20-PSC-NE	254	280	2515	254	508	356	610	151/2	1372
PHMS-24-PSC-CR	280	305	3073	254	610	356	711	151/2	1575
PHMS-24-PSC-NE	280	305	3073	254	610	356	711	151/2	1575
PHMS-32-PSC-CR	330	356	4191	254	813	356	915	151/2	1981
PHMS-32-PSC-NE	330	356	4191	254	813	356	915	151/2	1981