



Grate Magnets



To select the correct grate size for hoppers and similar applications, measure the area of the discharge opening in inches and double it, so as not to restrict product flow.

Then choose a standard grate from the table that comes closest to the size you've calculated. Grates can often be laid in place without a fixed mounting.

To order Heavy-Duty Grates, use the same formula. Heavy-Duty Grates are not available with baffles; nor are Alnico magnets a standard option for these grates. Call for more information about special applications and construction standards.

Ordering Information

Part numbers for grates describe physical features. The numbers have four parts. The first two letters indicate separator type and shape. The second part consists of digits that give dimensions in inches. Rectangular grates have both width and length specified. The third and fourth parts do not appear in the table. They specify Heavy-Duty Grates, baffles, and magnetic material.

Part Number Explanation

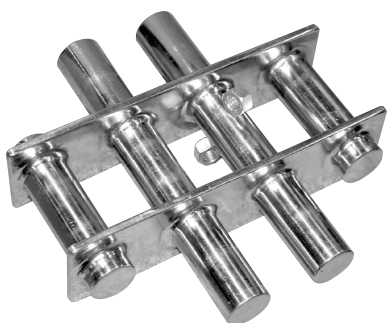
| GS | 12 18 | A | CR |
|--|--|----------------------------------|--|
| Type/Shape | Size | Options | Magnet Material |
| GR= Round grate | 4= Round grate with 100mm diameter or square grate with 100mm sides | H= Heavy duty | CR= Ceramic |
| GS= Square grate or Rectangular grate | 12 18= Rectangular grate 300mm wide with cartridges 450mm long | P= Plain style no baffles | AL= Alnico (not available in Heavy-Duty grate magnets) |
| | | A= Angular baffles | NPB= Neodymium Power-Balanced™ Rare Earth material |
| | | R= Rod baffles | NHI= Neodymium High-Intensity Rare Earth material for the most demanding applications (not available in Heavy-Duty grate magnets) |

Standard Round, Square, and Rectangular Grates

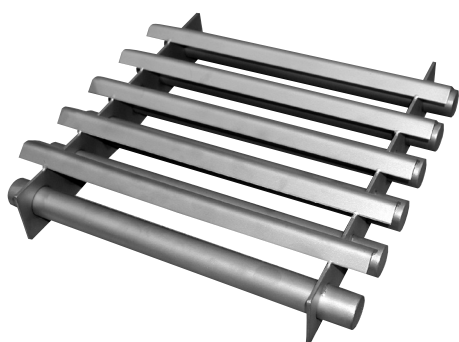
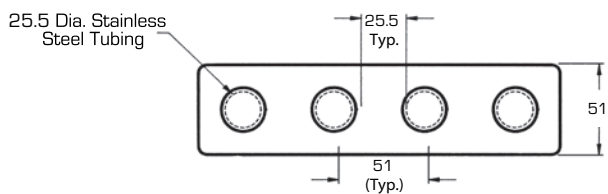
Length of Cartridge

| | | 4 | 6 | 8 | 10 | 12 | 14 | 16 | 18 | 20 | 22 | 24 | 26 | 28 | 30 | 32 | 34 | 36 |
|--------------------|----|--------------|--------------|--------------|----------------|----------------|----------------|----------------|----------------|----------------|----------------|----------------|----------------|----------------|----------------|----------------|----------------|----------------|
| Width of Cartridge | 4 | GR-4 GS-4 | GS-4 6 | GS-4 8 | GS-4 10 | GS-4 12 | GS-4 14 | GS-4 16 | GS-4 18 | GS-4 20 | GS-4 22 | GS-4 24 | GS-4 26 | GS-4 28 | GS-4 30 | GS-4 32 | GS-4 34 | GS-4 36 |
| | 6 | GS-6 4 | GR-6 GS-6 | GS-6 8 | GS-6 10 | GS-6 12 | GS-6 14 | GS-6 16 | GS-6 18 | GS-6 20 | GS-6 22 | GS-6 24 | GS-6 26 | GS-6 28 | GS-6 30 | GS-6 32 | GS-6 34 | GS-6 36 |
| | 8 | GS-8 4 | GS-8 6 | GR-8 GS-8 | GS-8 10 | GS-8 12 | GS-8 14 | GS-8 16 | GS-8 18 | GS-8 20 | GS-8 22 | GS-8 24 | GS-8 26 | GS-8 28 | GS-8 30 | GS-8 32 | GS-8 34 | GS-8 36 |
| | 10 | GS-10 4 | GS-10 6 | GS-10 8 | GR-10 GS-10 | GS-10 12 | GS-10 14 | GS-10 16 | GS-10 18 | GS-10 20 | GS-10 22 | GS-10 24 | GS-10 26 | GS-10 28 | GS-10 30 | GS-10 32 | GS-10 34 | GS-10 36 |
| | 12 | GS-12 4 | GS-12 6 | GS-12 8 | GS-12 10 | GR-12 GS-12 | GS-12 14 | GS-12 16 | GS-12 18 | GS-12 20 | GS-12 22 | GS-12 24 | GS-12 26 | GS-12 28 | GS-12 30 | GS-12 32 | GS-12 34 | GS-12 36 |
| | 14 | GS-14 4 | GS-14 6 | GS-14 8 | GS-14 10 | GS-14 12 | GR-14 GS-14 | GS-14 16 | GS-14 18 | GS-14 20 | GS-14 22 | GS-14 24 | GS-14 26 | GS-14 28 | GS-14 30 | GS-14 32 | GS-14 34 | GS-14 36 |
| | 16 | GS-16 4 | GS-16 6 | GS-16 8 | GS-16 10 | GS-16 12 | GS-16 14 | GR-16 GS-16 | GS-16 18 | GS-16 20 | GS-16 22 | GS-16 24 | GS-16 26 | GS-16 28 | GS-16 30 | GS-16 32 | GS-16 34 | GS-16 36 |
| | 18 | GS-18 4 | GS-18 6 | GS-18 8 | GS-18 10 | GS-18 12 | GS-18 14 | GS-18 16 | GR-18 GS-18 | GS-18 20 | GS-18 22 | GS-18 24 | GS-18 26 | GS-18 28 | GS-18 30 | GS-18 32 | GS-18 34 | GS-18 36 |
| | 20 | GS-20 4 | GS-20 6 | GS-20 8 | GS-20 10 | GS-20 12 | GS-20 14 | GS-20 16 | GS-20 18 | GR-20 GS-20 | GS-20 22 | GS-20 24 | GS-20 26 | GS-20 28 | GS-20 30 | GS-20 32 | GS-20 34 | GS-20 36 |
| | 22 | GS-22 4 | GS-22 6 | GS-22 8 | GS-22 10 | GS-22 12 | GS-22 14 | GS-22 16 | GS-22 18 | GS-22 20 | GR-22 GS-22 | GS-22 24 | GS-22 26 | GS-22 28 | GS-22 30 | GS-22 32 | GS-22 34 | GS-22 36 |
| | 24 | GS-24 4 | GS-24 6 | GS-24 8 | GS-24 10 | GS-24 12 | GS-24 14 | GS-24 16 | GS-24 18 | GS-24 20 | GS-24 22 | GR-24 GS-24 | GS-24 26 | GS-24 28 | GS-24 30 | GS-24 32 | GS-24 34 | GS-24 36 |
| | 26 | GS-26 4 | GS-26 6 | GS-26 8 | GS-26 10 | GS-26 12 | GS-26 14 | GS-26 16 | GS-26 18 | GS-26 20 | GS-26 22 | GS-26 24 | GR-26 GS-26 | GS-26 28 | GS-26 30 | GS-26 32 | GS-26 34 | GS-26 36 |
| | 28 | GS-28 4 | GS-28 6 | GS-28 8 | GS-28 10 | GS-28 12 | GS-28 14 | GS-28 16 | GS-28 18 | GS-28 20 | GS-28 22 | GS-28 24 | GS-28 26 | GR-28 GS-28 | GS-28 30 | GS-28 32 | GS-28 34 | GS-28 36 |
| | 30 | GS-30 4 | GS-30 6 | GS-30 8 | GS-30 10 | GS-30 12 | GS-30 14 | GS-30 16 | GS-30 18 | GS-30 20 | GS-30 22 | GS-30 24 | GS-30 26 | GS-30 28 | GR-30 GS-30 | GS-30 32 | GS-30 34 | GS-30 36 |
| | 32 | GS-32 4 | GS-32 6 | GS-32 8 | GS-32 10 | GS-32 12 | GS-32 14 | GS-32 16 | GS-32 18 | GS-32 20 | GS-32 22 | GS-32 24 | GS-32 26 | GS-32 28 | GS-32 30 | GR-32 GS-32 | GS-32 34 | GS-32 36 |
| | 34 | GS-34 4 | GS-34 6 | GS-34 8 | GS-34 10 | GS-34 12 | GS-34 14 | GS-34 16 | GS-34 18 | GS-34 20 | GS-34 22 | GS-34 24 | GS-34 26 | GS-34 28 | GS-34 30 | GS-34 32 | GR-34 GS-34 | GS-34 36 |
| | 36 | GS-36 4 | GS-36 6 | GS-36 8 | GS-36 10 | GS-36 12 | GS-36 14 | GS-36 16 | GS-36 18 | GS-36 20 | GS-36 22 | GS-36 24 | GS-36 26 | GS-36 28 | GS-36 30 | GS-36 32 | GS-36 34 | GR-36 GS-36 |

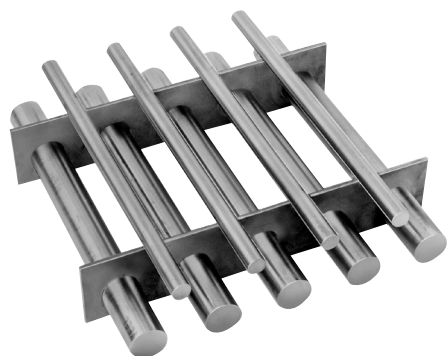
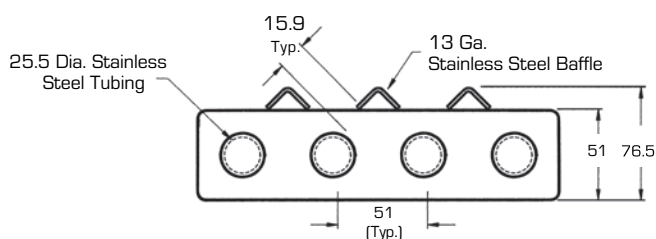
All dimensions are in mm Specifications are subject to change without notice



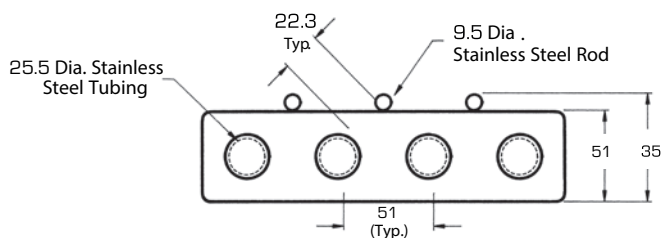
Plain Style



Angular Baffles



Rod Baffles



Heavy-Duty Grates

